

# CCTV for Everyone

## Web-based Service for Collaborative Surveillance

- Availability from all over the world;
- Camera selection with the help of interactive maps;
- Users' authorization;
- Camera advanced functions support (pan, tilt, zoom, motion detection, etc.);
- An opportunity to record and store video on the operator's platform;
- User friendly interface for the service management;
- Flexible right management system.

The screenshot displays the Netris CCTV web interface. At the top left, the logo 'Netris CCTV' is visible. The main area is a map with several camera icons. A callout box on the left states: 'Only authorized users can control the camera's pan, tilt, zoom and other advanced functionality.' A circular inset on the left shows a camera control interface with a compass and zoom controls. A callout box on the right states: 'Support of several web mapping services.' A circular inset on the right shows a dropdown menu for mapping services including 'OSM', 'Mapnik', 'OpenStreetMap', 'Google', 'Map', 'Satellite', 'Hybrid', and 'Landsat'. Below the map, a video feed shows a construction site with cranes and buildings. The video title is 'Klimashkina 82, Moscow, ulitsa Klimashkina, 82'.

## Monetisation points

- Subscription
- Number of connected cameras/IP addresses
- Recording in two modes: permanent and scheduled
- Video storing capacity
- Additional services

Netris WebView CCTV Edition is a carrier-class solution to provide CCTV service over the Internet. The solution is designed for telecom operators and internet service providers that are interested in expanding the range of IP services, increasing ARPU and presenting themselves as a high technology company with a wide offer of additional services on the basis of the latest achievements in IP-communications.

## Security

Netris WebView CCTV Edition restricts access to the service management. Settings are available for the administrator or authorized users. The standard access levels are administrator, group of authorized users, for everyone (guests).

## Netris WebView CCTV Edition Key Benefits

- Devices to support: smart phones (Apple iOS, Android, Windows Mobile), iPad, iPod, computers, STBs;
- Support of several web mapping services in one application;
- Ability to record and store video archives by date, camera ID, labels;
- An unlimited number of cameras can be connected;
- New business opportunity: off-the-shelf offer for b2c and b2b markets with a contract, cameras and installation manuals.

## Administrator Interface

The service allows connecting IP-cameras to the operator's recording and storing system and watching the video any time over the Internet. With the administrator interface a user can add new cameras, manage security level and work with different settings. Only authorized users can run a camera's pan, tilt, zoom and other advanced functionality.

## Solution Components

### Netris CCTV SDP

CCTV SDP is responsible for GUI, user authorization, accounting and cross-integration with existed operator's systems.

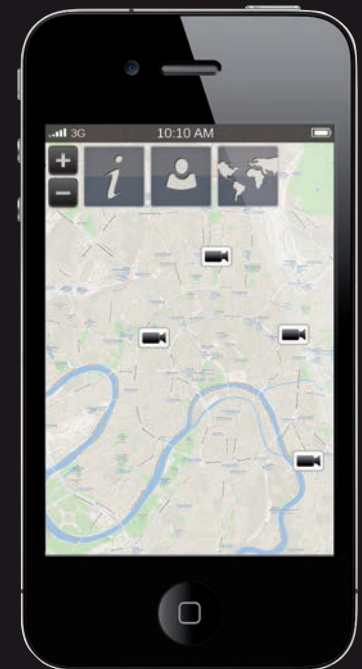
### Netris iStream Video Server

iStream delivers independent scalability of content ingest, storage and streaming across IP networks worldwide

Players:     

Streaming Protocols: HLS, RTSP, RTMP, WMSP, HTTP, MJPEG, UDP (for content receiving)

Mobile devices support powered by Apple iOS (iPhone, iPad, iPod), Windows Mobile, Android, Symbian.



## About Netris

Netris ([www.netris.tv](http://www.netris.tv)) is the leader in IP-communications software development and systems integration. Netris is focused on development of award-winning Digital TV, Video Consulting and Banking Intelligence solutions. Twice Netris has won the National Big Digit Award in the "For New Technologies Adaption" and "Head Platforms for TV Streaming" nominations.

### Netris JSC

Email: [info@netris.ru](mailto:info@netris.ru)  
Phone: +7 495 950 55 25  
[www.netris.tv](http://www.netris.tv)

